



For Windows: How to Print from the MDRU Printer

Vincent Wu - 2025-05-22 - Print

This is NOT the large format printer. The service is no longer offered by MDRU.

1. Connect your computer to the wired EOAS network or [EOS VPN if on WiFi](#). If you do not have access to the EOS VPN, please submit a helpdesk ticket to helpdesk@eoas.ubc.ca for access.
2. Download the Canon printer drivers for your operating system:
<https://en.canon-cna.com/support/products/imagerunner/imagerunner-advance-c2230i.html?type=drivers>

PCL | **PostScript** | **UFR II**

The Canon-developed PCL6 printer driver is a widely-used driver in office environments, which allows for efficient print processing from your computer, as the printer is responsible for the bulk of print data processing.

Latest version

[Windows 32bit & 64bit] Generic Plus PCL6 Printer Driver V2.72

File version: V2.72 | **Release date:** 27 March 2023

Operating system(s)

Windows 11	Windows 10 (32-bit)	Windows 10 (64-bit)	Windows 8.1 (32-bit)
Windows 8.1 (64-bit)	Windows 7 (32-bit)	Windows 7 (64-bit)	Windows Server 2008 (32-bit)
Windows Server 2008 (64-bit)	Windows Server 2008 R2 (64-bit)	Windows Server 2012 (64-bit)	Windows Server 2012 R2 (64-bit)
Windows Server 2016 (64-bit)	Windows Server 2019 (64-bit)	Windows Server 2022 (64-bit)	

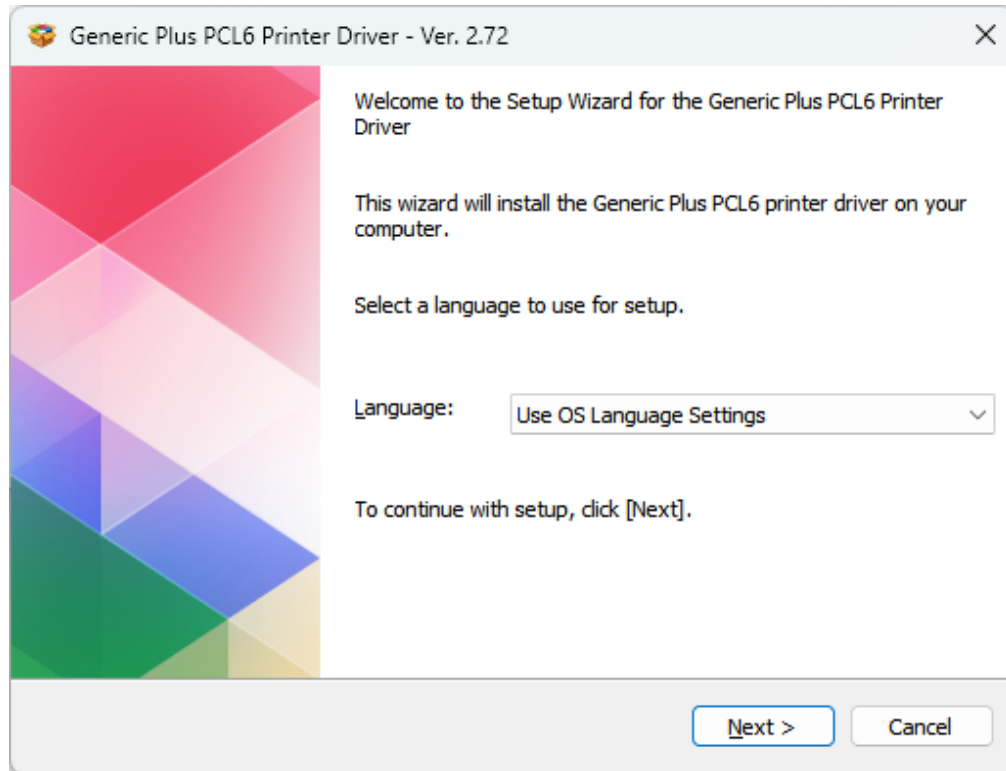
Language(s)

English	Français	Español	Italiano
Deutsch	Dansk	Suomi	Nederlands
Norsk	Svenska	Русский	العربية
Čeština	Magyar	Polski	Português
Türkçe	Slovensky	Українська	Euskara
Català	עברית	한국어	Malay
繁體中文	ไทย	Tiếng Việt	简体中文

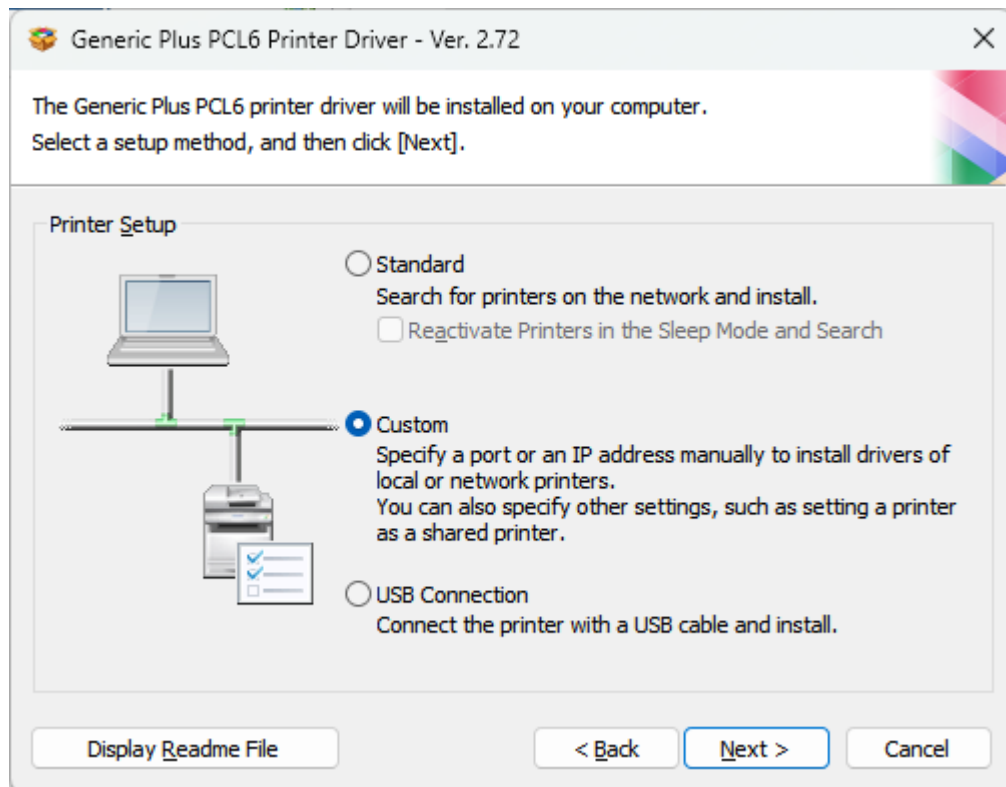
[More details](#) | [Email link](#) | **DOWNLOAD**

3. After the drivers have finished downloading, open the file and it will automatically extract a folder under the same name as the file you just downloaded.
4. After opening the folder, open the 'x64' folder, then run the 'Setup' file

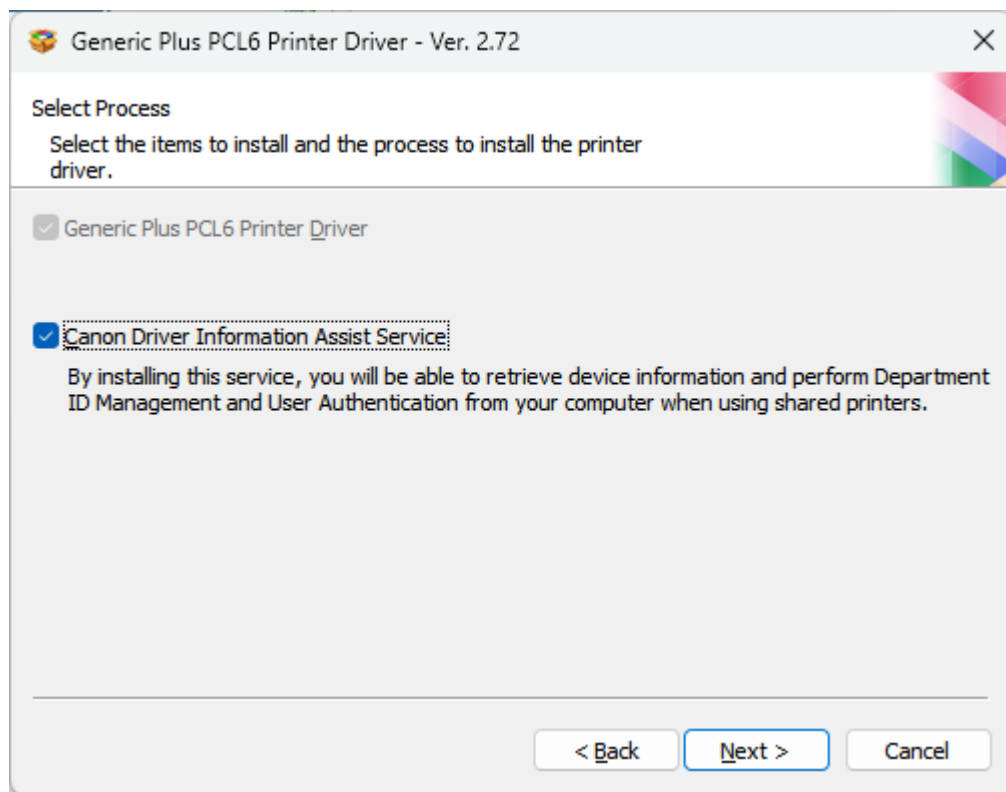
5. When setup opens, click Next



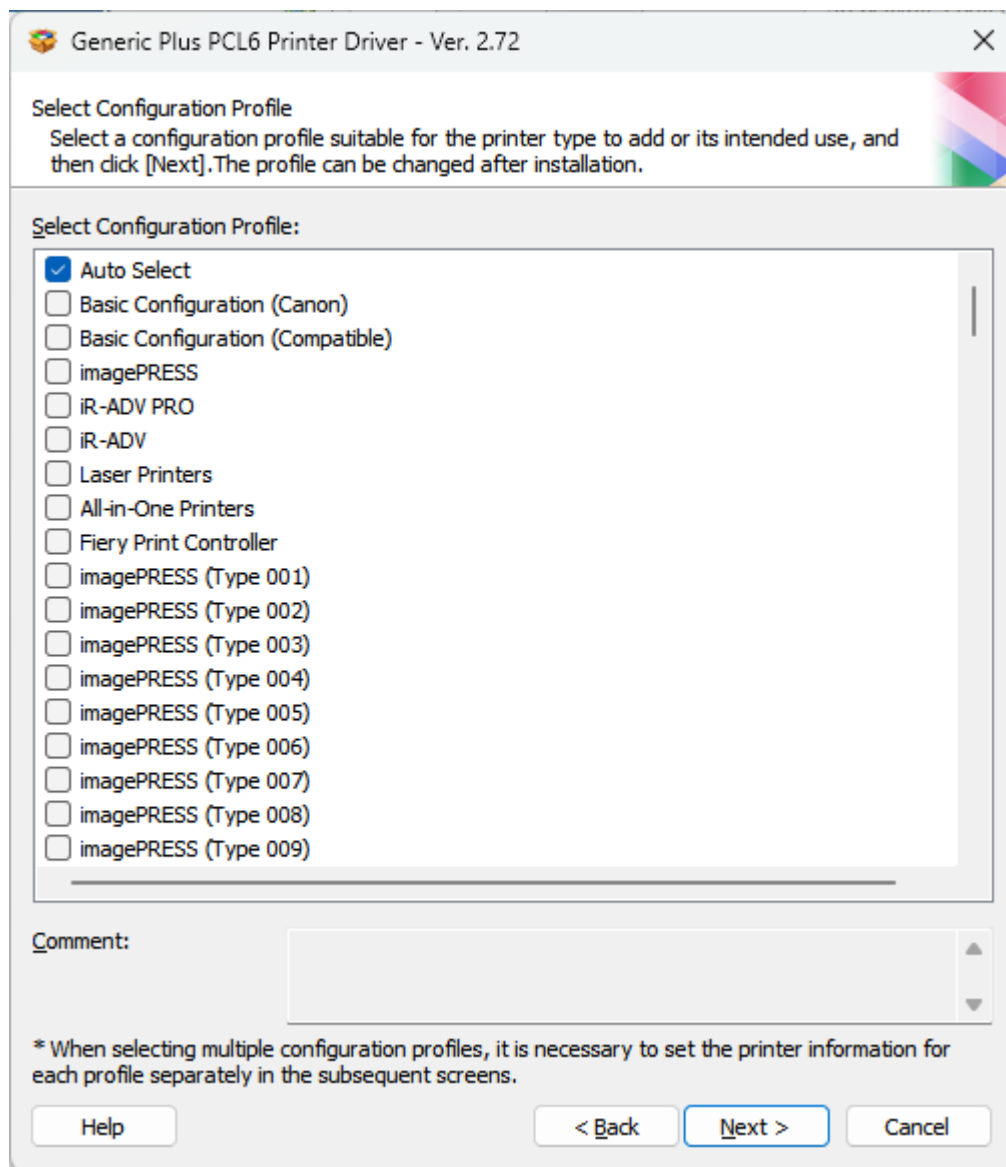
6. Click Yes to agree to the terms
7. Click on 'Custom'



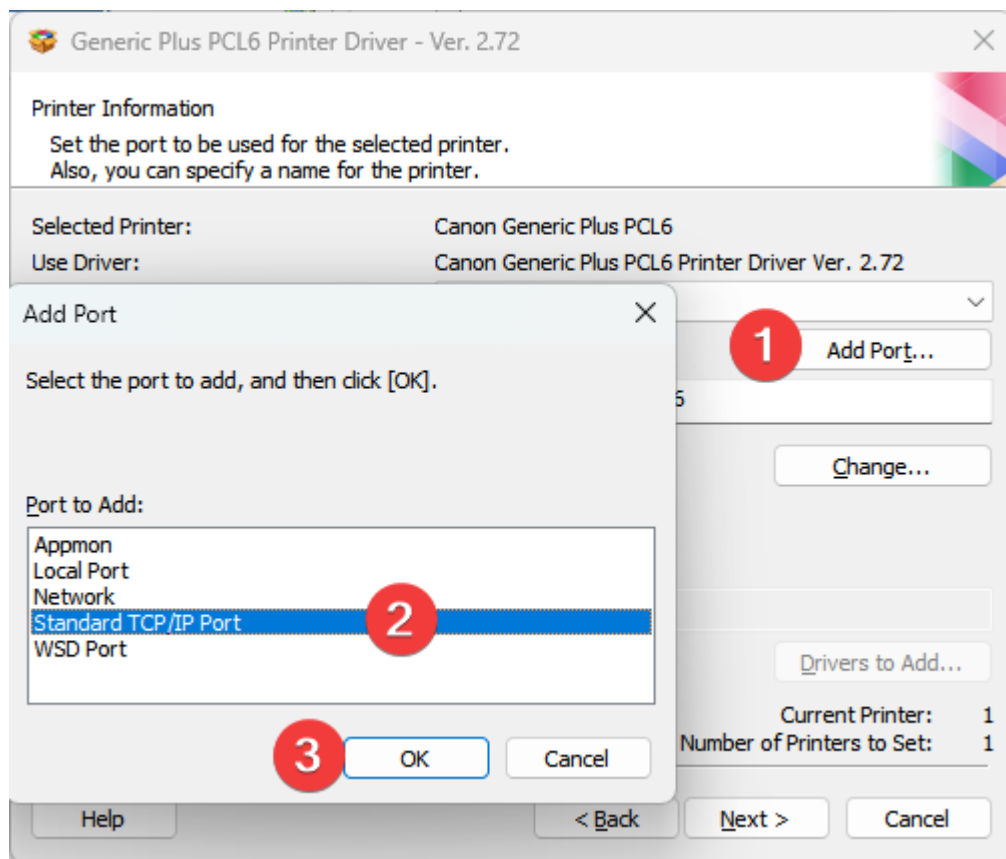
8. Check the 'Canon Driver Information Assist Service', then click 'Yes'



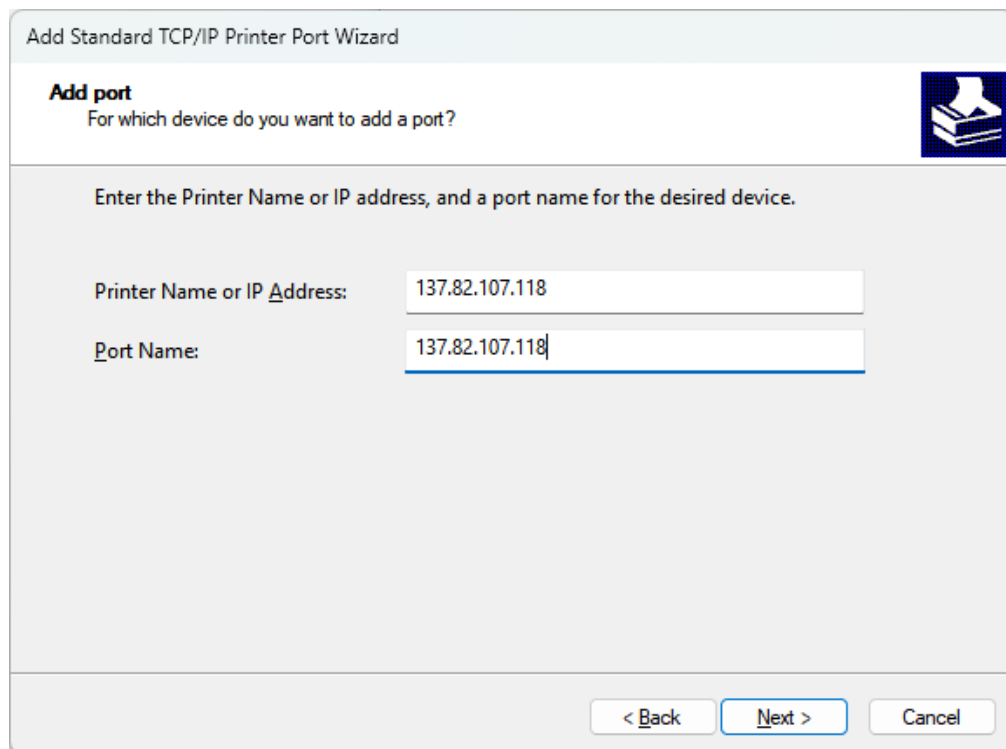
9. Continue by clicking 'Next'



10. Click 'Add Port' then choose 'Standard TCP/IP Port' and then 'OK'



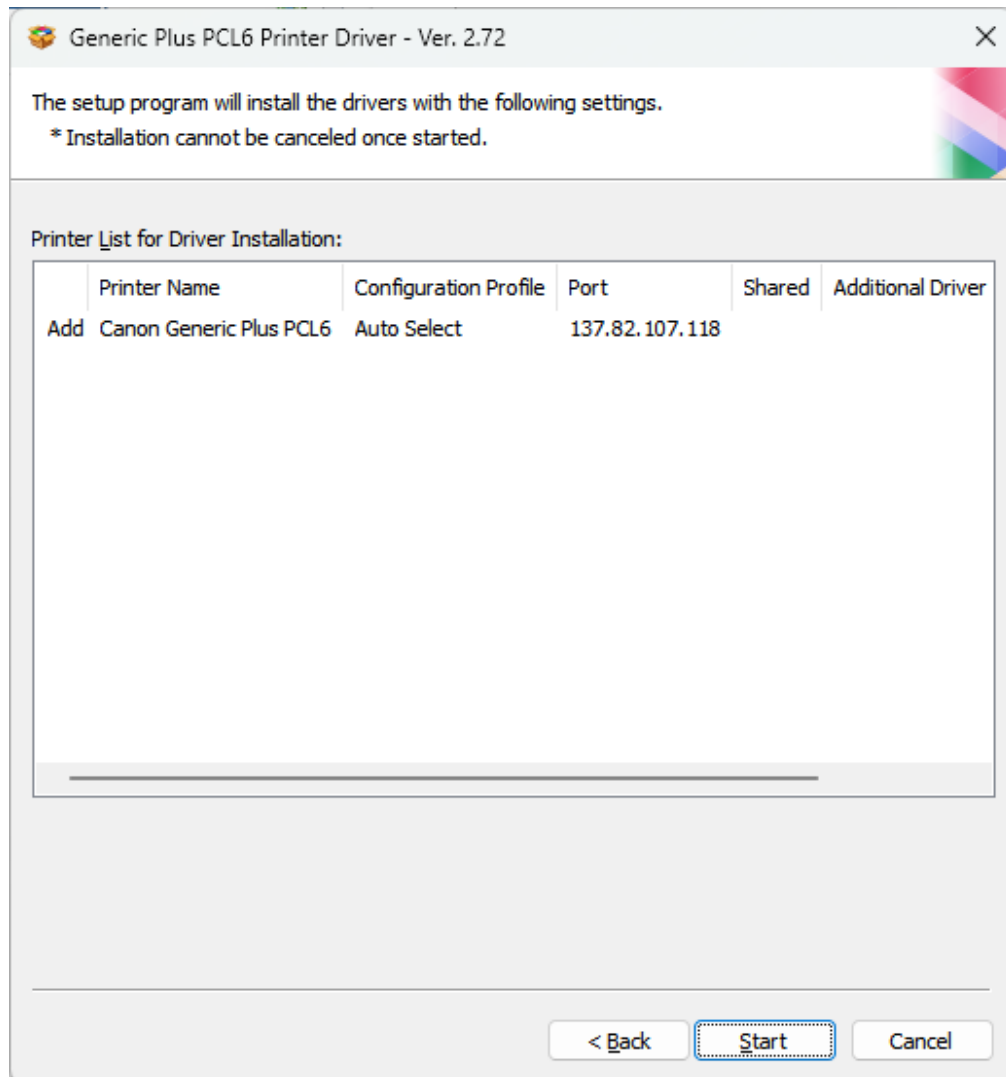
11. In the Wizard that pops up, click 'Next' and enter the IP address 137.82.107.118, then click 'Next'



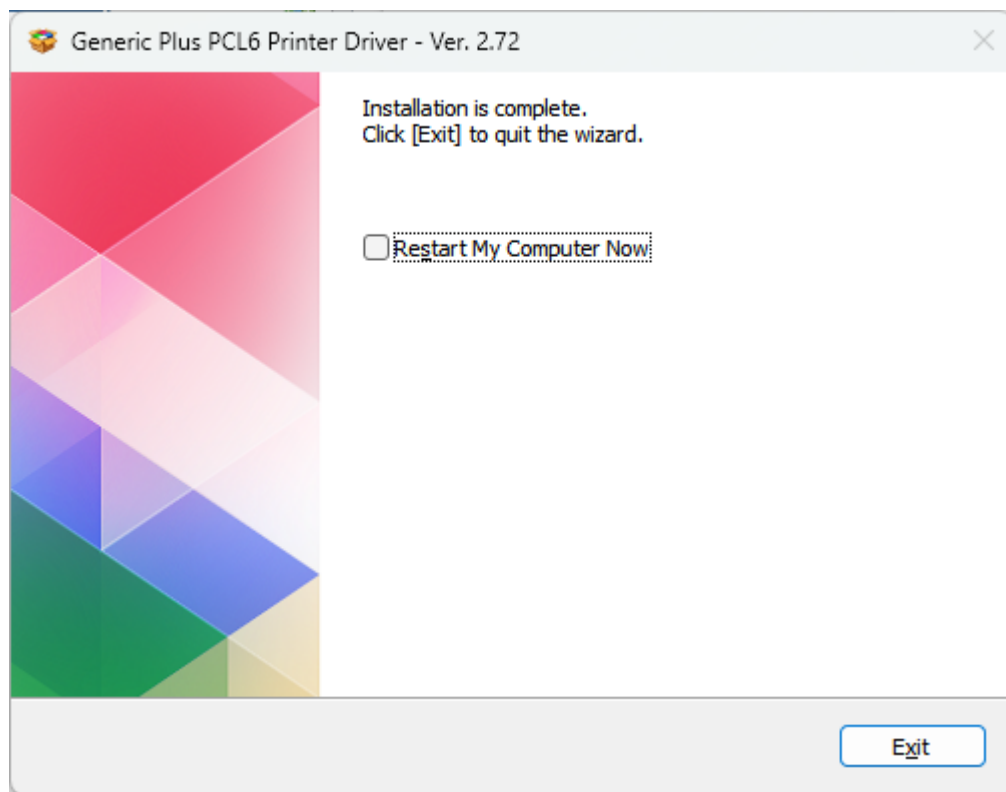
12. After, click 'Finish' to return to the setup window.
13. Select 137.82.107.118 in the list if it is not already selected.

You may rename the printer to 'MDRU Printer' or something memorable, then click 'Next'.

14. Click 'Start'



15. The drivers will now install, click 'Exit' when complete.



16. When printing to the Canon MDRU printer, you will be prompted for the department ID and pin. Please ask the MDRU Office Manager for access.

