

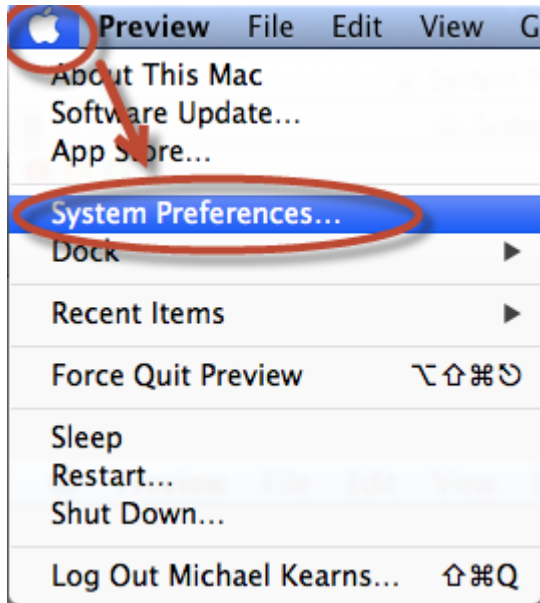
Knowledgebase > Mac OSX > How to determine if your Mac OSX computer's hard drive is encrypted

---

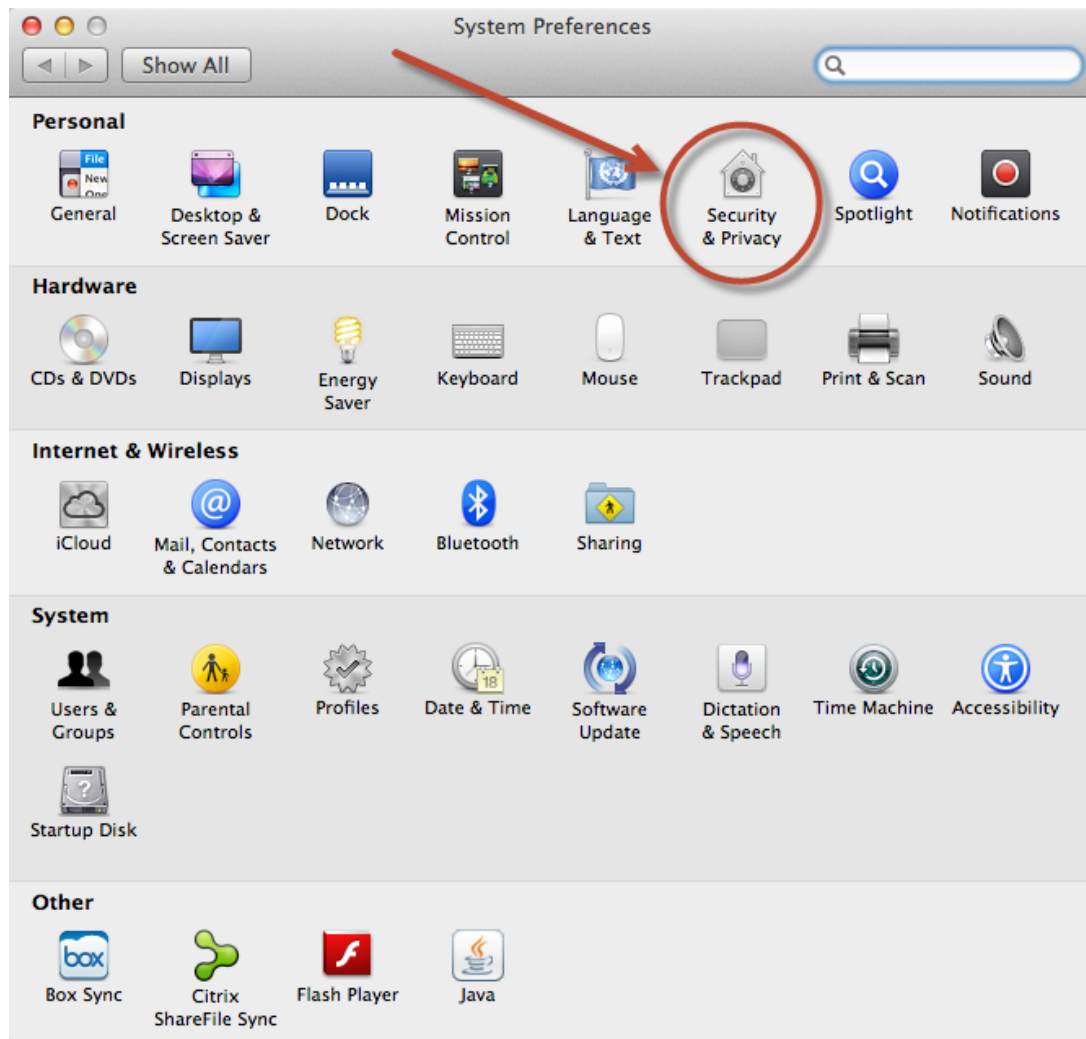
## How to determine if your Mac OSX computer's hard drive is encrypted

Burner EOAS - 2016-10-05 - Comments (0) - Mac OSX

Click on the "Apple" in the upper-left corner and go down to "System Preferences"



Click on "Security & Privacy"



Click on "FileVault" - Your hard drive is encrypted if you see the following text: "FileVault is turned on for the disk '"Macintosh HD"'." (\*PLEASE NOTE: The name of your hard drive may vary from the "Macintosh HD" example."

